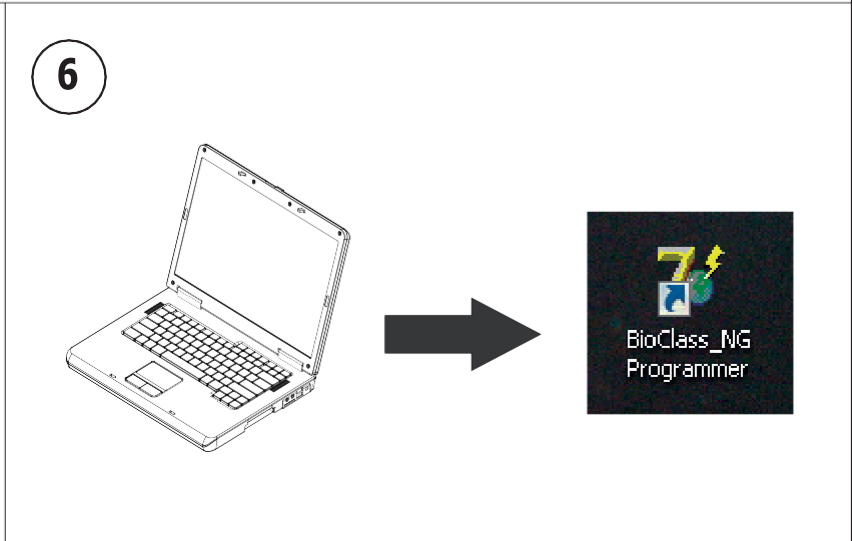
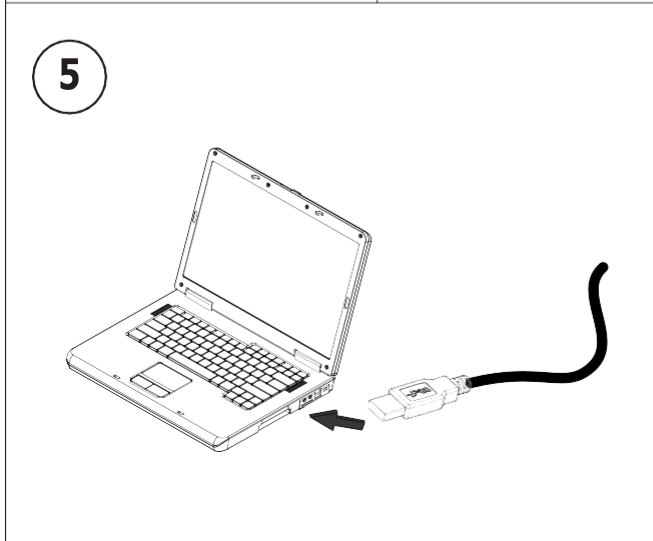
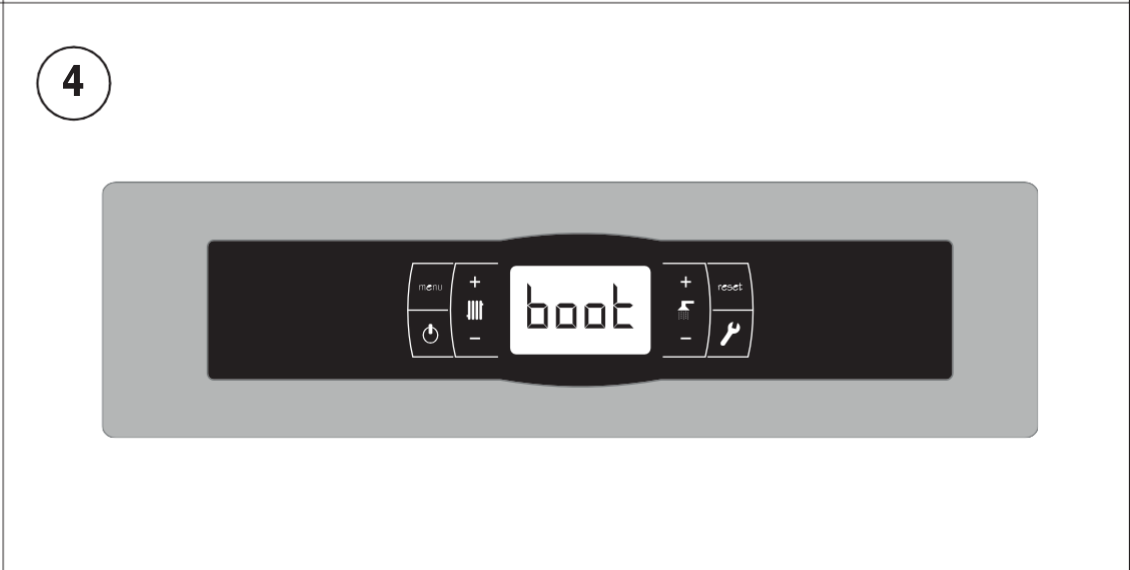
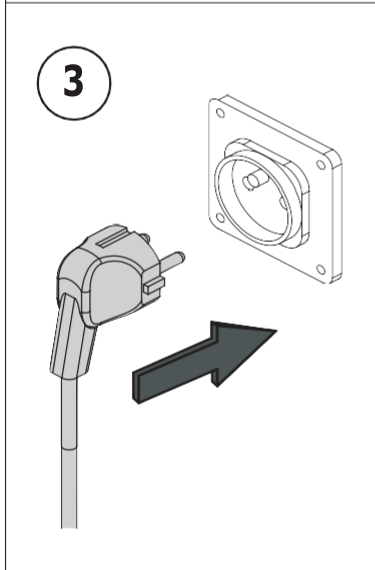
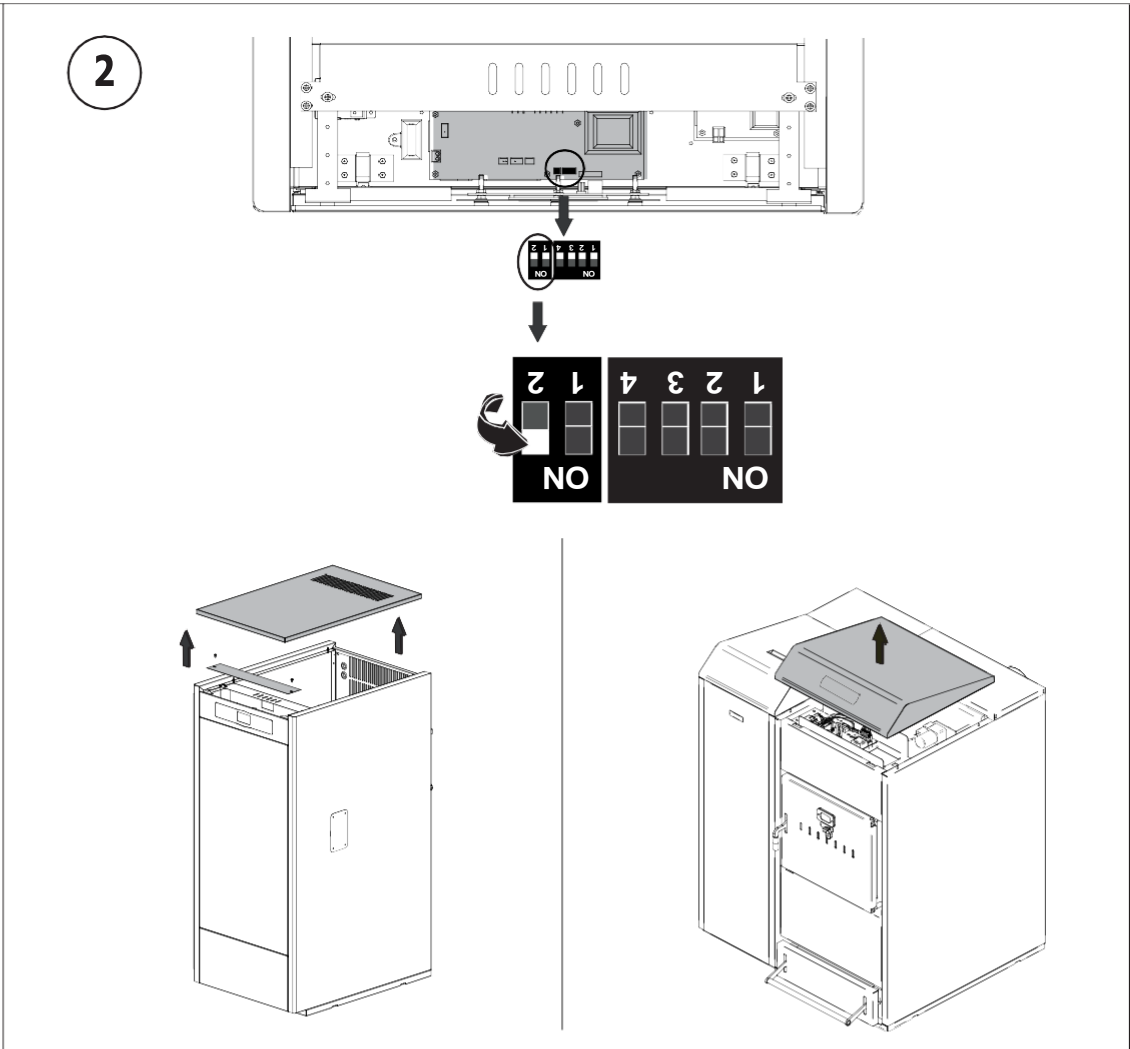
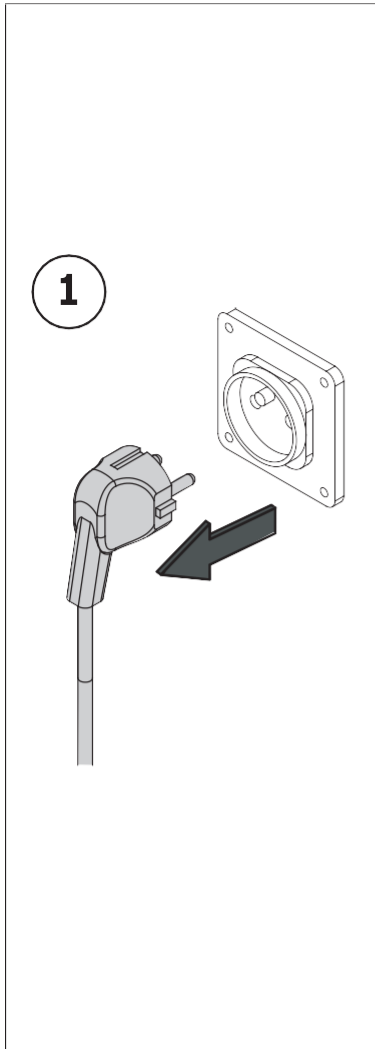


INSTRUKCJE AKTUALIZACJI OPROGRAMOWANIA BIOCLASS
INSTRUCCIÓN PARA LA ACTUALIZACIÓN DE SOFTWARE BIOCLASS NG
BIOCLASS NG SOFTWARE UPDATING INSTRUCTIONS
INSTRUCTION POUR LA MISE À JOUR DU LOGICIEL BIOCLASS NG
ISTRUZIONI PER L'AGGIORNAMENTO DEL SOFTWARE BIOCLASS NG
INSTRUÇÃO PARA ATUALIZAÇÃO DO SOFTWARE BIOCLASS NG



6.1

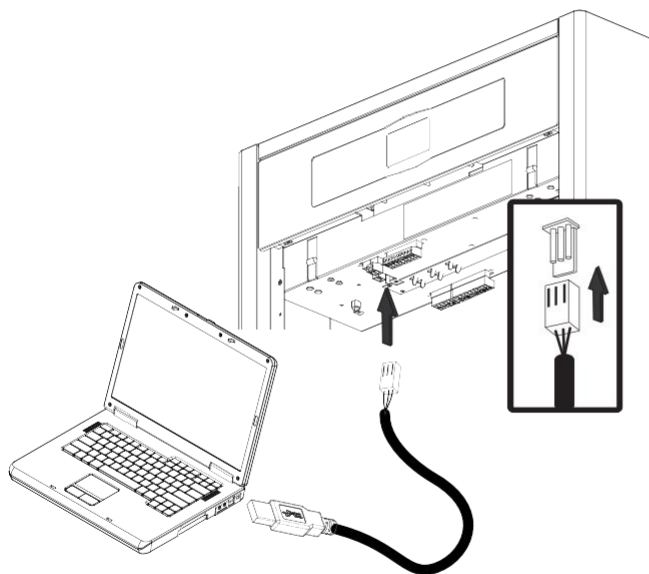
CCDPA Płyta główna

CCDPA Main board

CCDPA Carte alimentation

CCDPA Scheda alimentazione

CCDPA Cartão alimentação



6.2

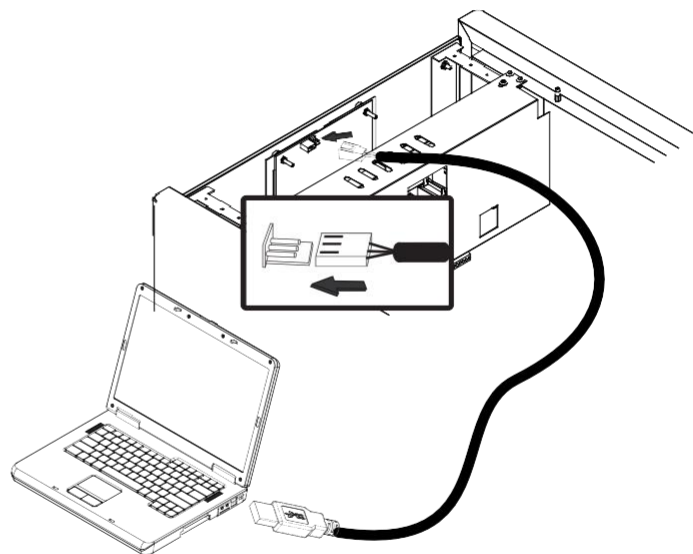
CCDPD Płyta wyświetlacza

CCDPD Display board

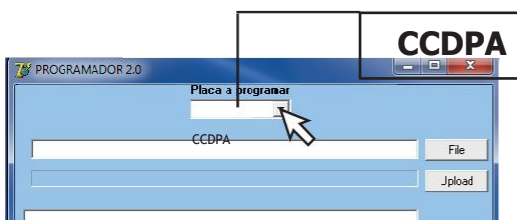
CCDPD Carte display

CCDPD Scheda display

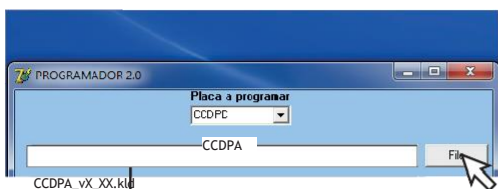
CCDPD Cartão display



1.

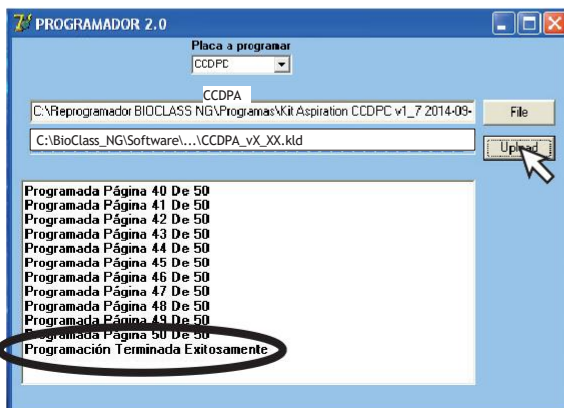


2.

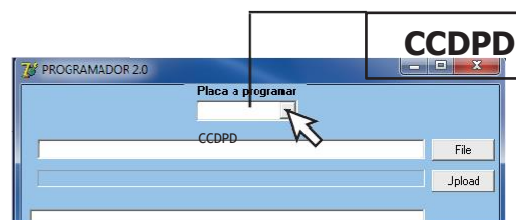


C:\BioClass_NG\Software\...\CCDPA_vX_XX.kld

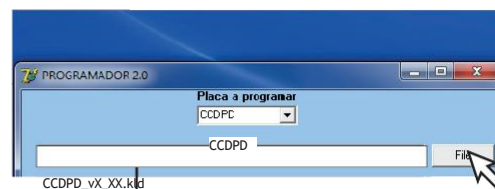
Upload



1.

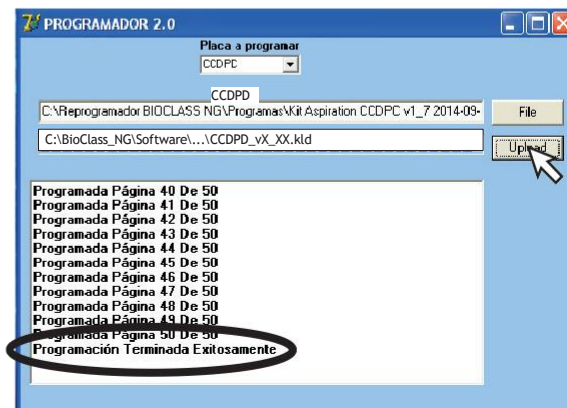


2.



C:\BioClass_NG\Software\...\CCDPD_vX_XX.kld

Upload



iWAŻNE! Kiedy rozpocznie się wgrzywanie, NIE ODŁĄCZAĆ KABLA USB.

IMPORTANT! Once the programming has started, DO NOT DISCONNECT THE USB CABLE.

6.1

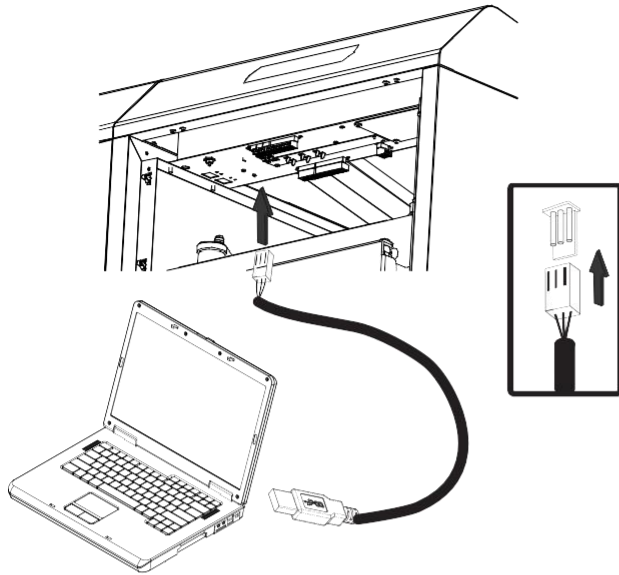
CCDPE Płyta główna DualTherm


CCDPE Main board


CCDPE Carte alimentation

CCDPE Scheda alimentazione


CCDPE Cartão alimentação

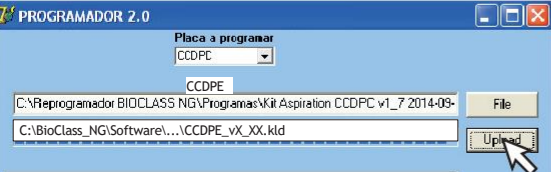


1. 

2. 

C:\BioClass_NG\Software\...\CCDPE_vX_XX.kld





Programada Página 40 De 50
 Programada Página 41 De 50
 Programada Página 42 De 50
 Programada Página 43 De 50
 Programada Página 44 De 50
 Programada Página 45 De 50
 Programada Página 46 De 50
 Programada Página 47 De 50
 Programada Página 48 De 50
 Programada Página 49 De 50
 Programada Página 50 De 50
Programación Terminada Exitosamente

6.2

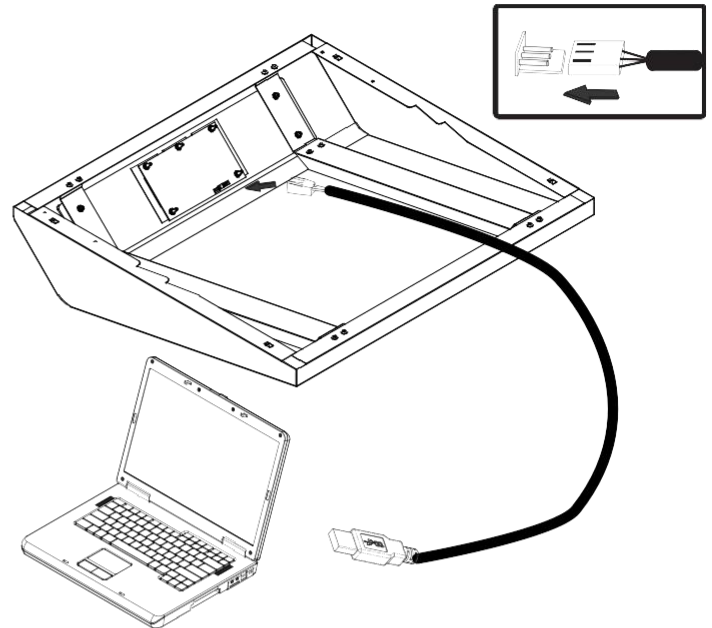
CCDPF Płyta wyświetlacza DualTherm


CCDPF Display board


CCDPF Carte display

CCDPF Scheda display


CCDPF Cartão display

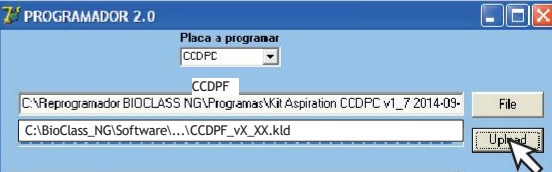


1. 

2. 

C:\BioClass_NG\Software\...\CCDPF_vX_XX.kld





Programada Página 40 De 50
 Programada Página 41 De 50
 Programada Página 42 De 50
 Programada Página 43 De 50
 Programada Página 44 De 50
 Programada Página 45 De 50
 Programada Página 46 De 50
 Programada Página 47 De 50
 Programada Página 48 De 50
 Programada Página 49 De 50
 Programada Página 50 De 50
Programación Terminada Exitosamente



IMPORTANTE! Una volta avviato la programmazione, NON SCOLLEGARE IL CAVO USB.
IMPORTANTE! Uma vez iniciada a programação, NÃO DESLIGUE A CABO USB.

6.3

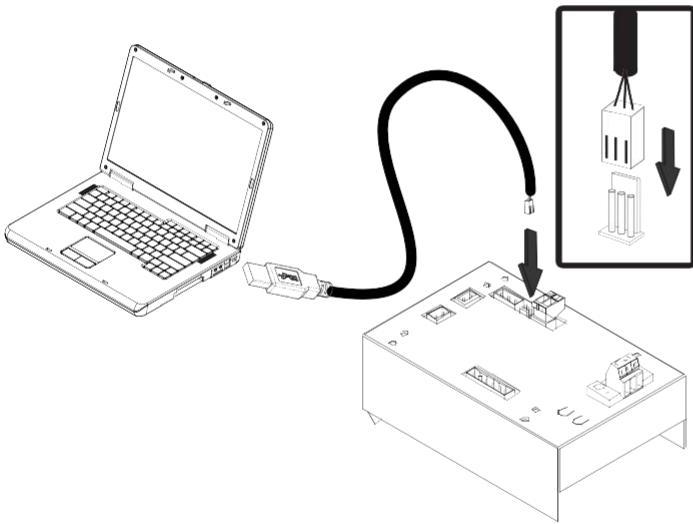
CCDPB Placa kit BIO

CCDPB Kit BIO's board

CCDPB Carte du kit BIO

CCDPB Scheda di kit BIO

CCDPB Cartão de kit BIO



6.4

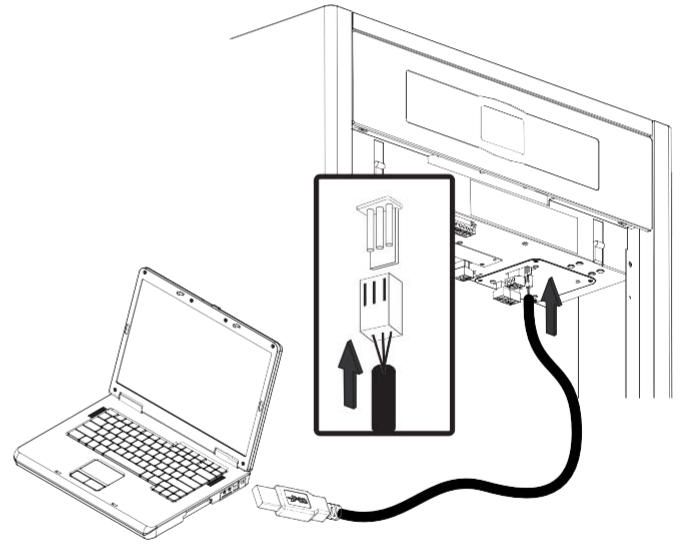
CCDPC Placa NG/CVS

CCDPC Kit aspiration NG's/CVS's board

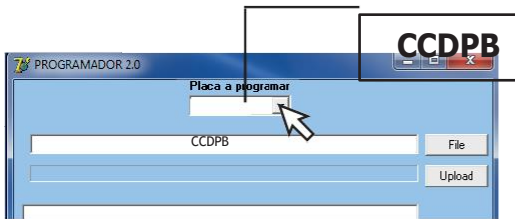
CCDPC Carte du kit aspiration NG/CVS

CCDPC Scheda kit aspiration NG/CVS

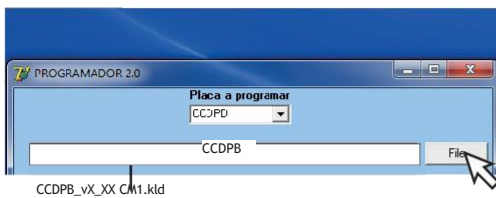
CCDPC Cartão kit aspiration NG/CVS



1.

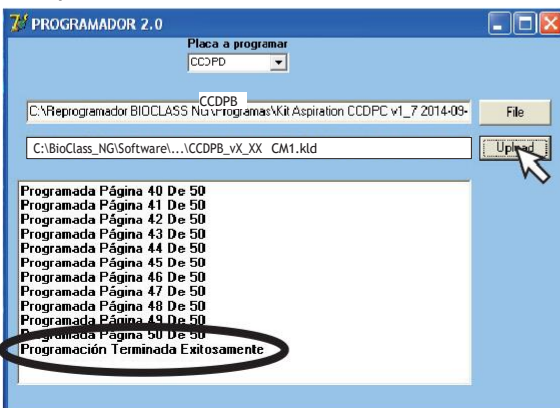


2.

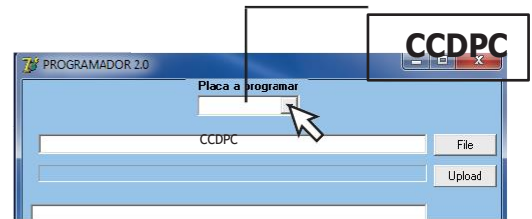


C:\BioClass_NG\Software\...\CCDPB_vX_XX CM1.kld / CCDPB_vX_XX CM2.kld

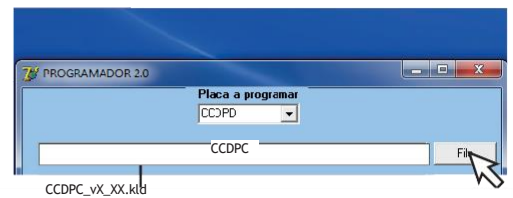
Upload



1.

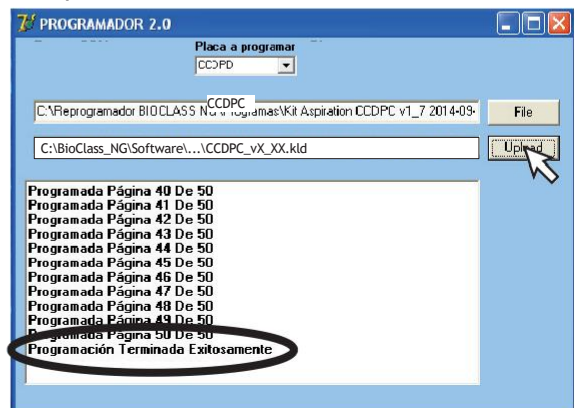


2.



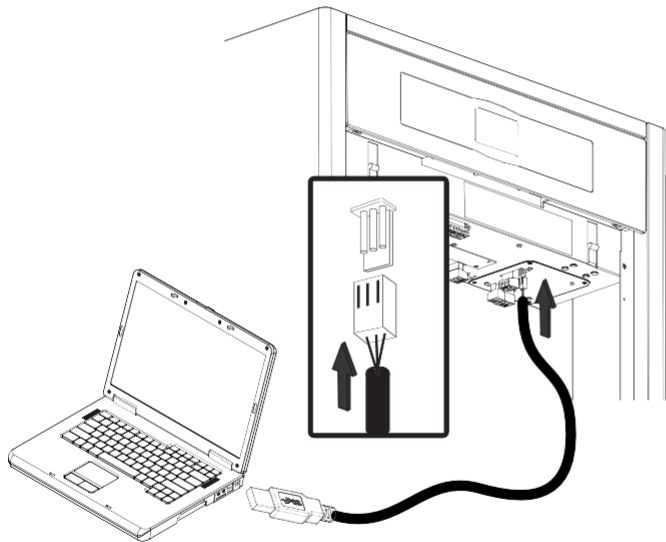
C:\BioClass_NG\Software\...\CCDPC_vX_XX.kld

Upload

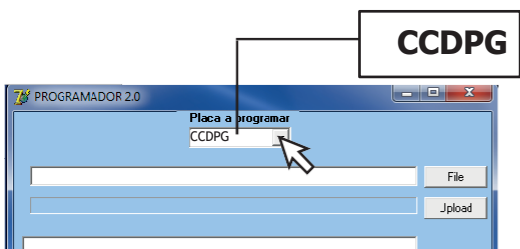


6.5

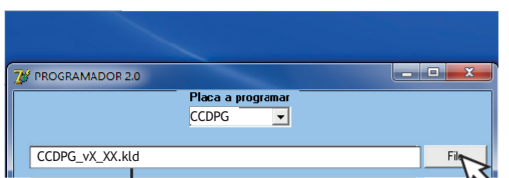
CCDPG Kontroler kaskady MC
CCDPG Cascade Manager MC
CCDPG Contrôle de Cascade MC
CCDPG Controllo di Cascata MC
CCDPG Controle de Cascata MC



1.

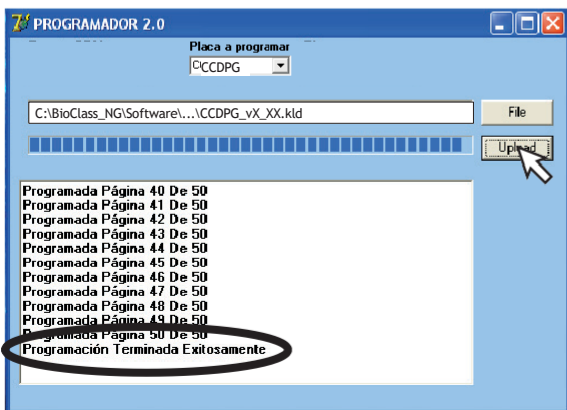


2.

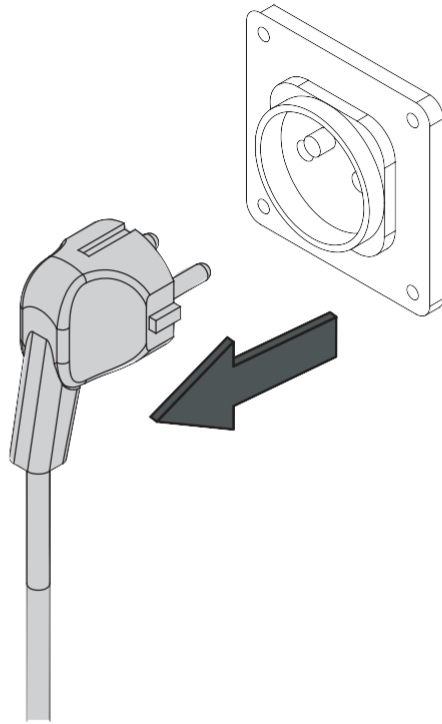


C:\BioClass_NG\Software\...\CCDPG_vX_XX.kld

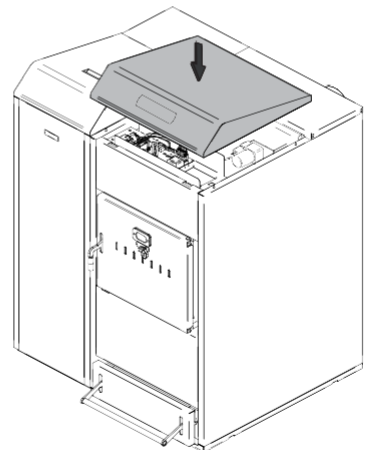
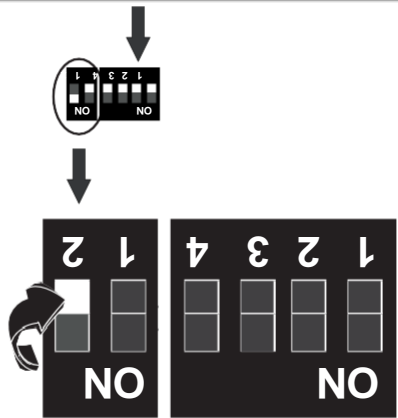
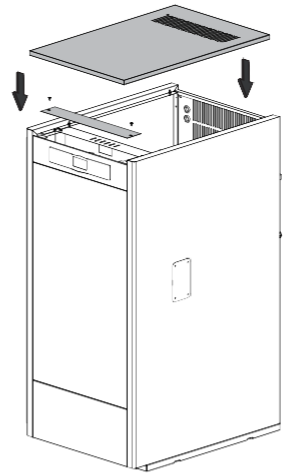
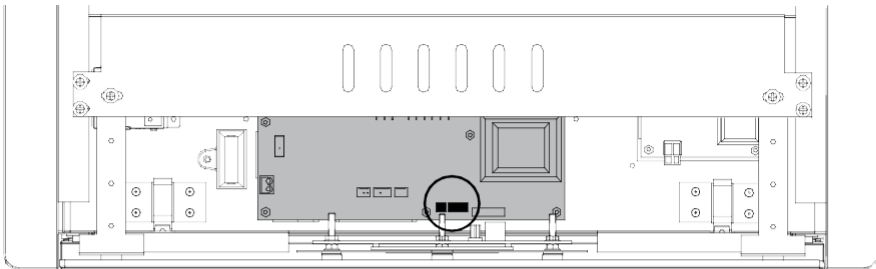
Upload



7



8



DOMUSA

T E K N I K

DIRECCIÓN POSTAL

Apartado 95
20730 AZPEITIA
Telfs: (+34) 943 813 899

FÁBRICA Y OFICINAS

B° San Esteban s/n
20737 ERREZIL (Gipuzkoa)

www.domusateknik.com

DOMUSA TEKNIK, se reserva la posibilidad de introducir, sin previo aviso, cualquier modificación en las características de sus productos.

CDOC0009|||9

CDOC000969

11/17